

Fosse Green Energy

Fosse Green Energy Ltd

AECOM Limited
Sunley House
4 Bedford Park
Surrey, CR0 2AP, UK
www.aecom.com

Legend

- DCO Site Boundary
- Geophysics Assets
- LiDAR - Regional Data**
 - Ditch
 - Field Boundary
 - Hollow Way
 - Hollow Way/Enclosure
 - Lynchet
 - Mound
 - Pit
 - Pt/Dewpond
 - Plough Headland/
Field Boundary
 - Plough Lynchet/Field
Boundary
 - Pond
 - Quarry
 - Rectilinear Enclosure
 - Road/Uncertain
 - Settlement
 - Baulk/Field Boundary
 - Disturbed ground
- LiDAR - Ellipse Data**
 - Pit
 - Pond
- ES Geophysical Survey**
 - Agricultural Trend
 - Trend
 - Drain
 - Historic Cultivation
 - Archaeology
 - Ferrous
 - Geology
 - Historic Landscape
Feature
 - Modern Service
 - Possible Archaeology
 - Former Field
Boundary
 - Increased Response

GB Background: Contains OS data © Crown Copyright and database right 2025
Contains data from OS Zoomstack
Historic England 2025. Contains Ordnance Survey data © Crown copyright and database right 2025. Data obtained November 2023

Regulation 5(2)(a) Infrastructure Planning (Applications: Prescribed Forms and Procedure) Regulations 2009.

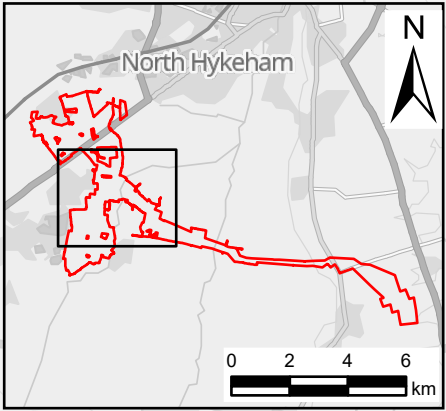
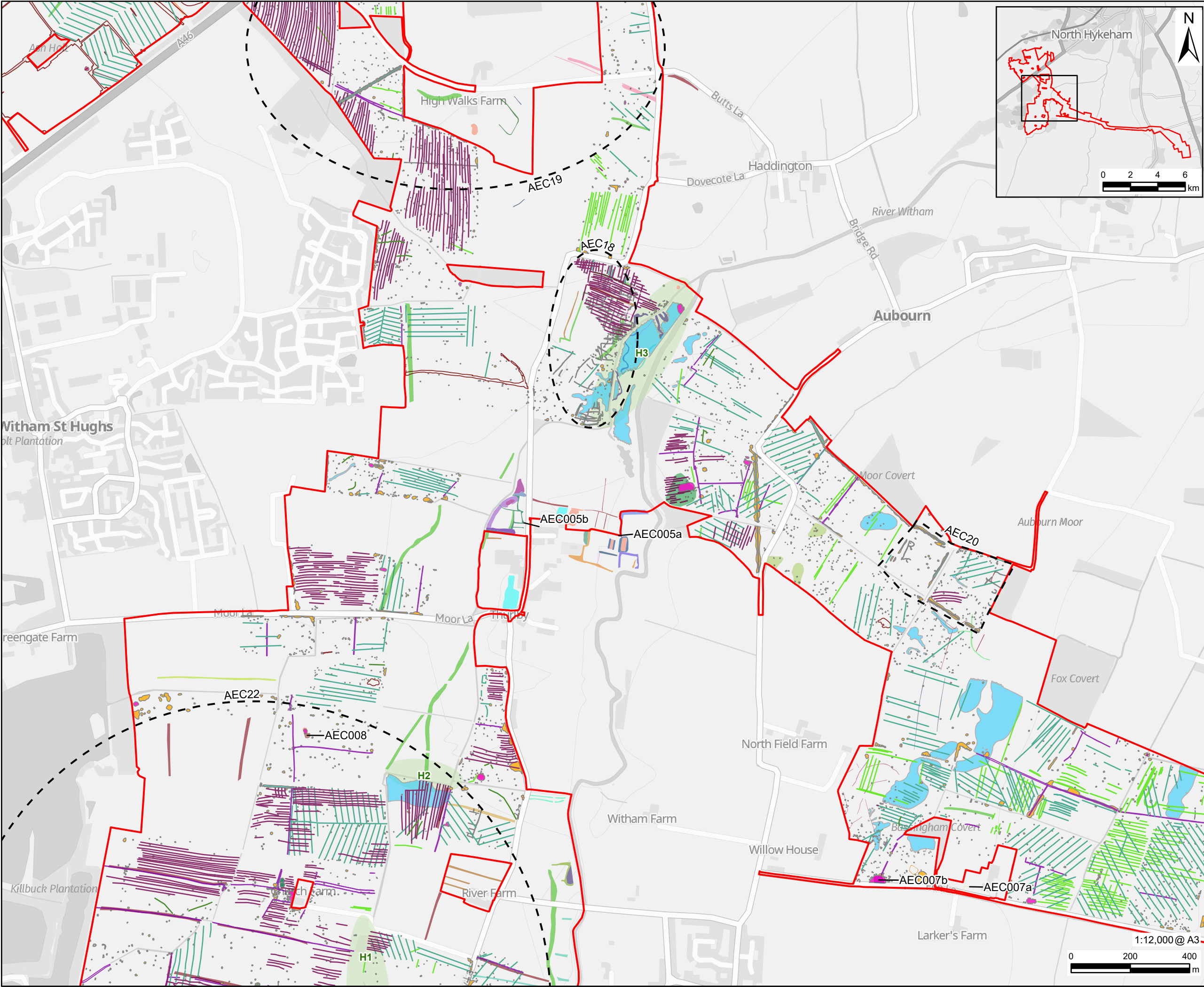
DCO Submission

Geophysical Survey and LiDAR Plan

FIGURE NUMBER	REV.
Figure 7-6 Sheet 1 of 6	01

EN010154/APP/6.2.

EN010154/APP/6.2.



PROJECT

Fosse Green Energy

CLIENT

Fosse Green Energy Ltd

CONSULTANT

AECOM Limited
Sunley House
4 Bedford Park
Surrey, CR0 2AP, UK
www.aecom.com

LEGEND

DCO Site Boundary	Settlement
Geophysics Assets	Spoil Heap
Historical Hedgerows	Strip Lynchet
Recent Disturbance	Trackway
Bank Earthwork	Trackway/Ridge
Cottage	Wall
Ditch	Baulk
Ditch/Natural Feature	Flood Defence
Drainage Ditch	Mound - Dump
Enclosure	Stack Sand
Enclosure/ Drairage	
Ditch	
Enclosure/Moat	
Field Boundary	
Hollow	
Hollow/Quarry	
Lynchet	
Mound	
Natural Feature	
Natural Feature/Pit	
Palaeochannel	
Pit/Dewpond	
Plough Headland/	
Field Boundary	
Plough Headland/	
Flood Defences	
Pond	
Pond/DAM	
Rectilinear Enclosure	
Road/Uncertain	
	Agricultural Trend
	Trend
	Drain
	Historic Cultivation
	Archaeology
	Ferrous
	Geology
	Historic Landscape Feature
	Modern Service
	Possible Archaeology
	Former Field Boundary
	Increased Response

NOTES

GB Background: Contains OS data © Crown Copyright and database right 2025
Contains data from OS Zoomstack
Historic England 2025. Contains Ordnance Survey data © Crown copyright and database right 2025. Data obtained November 2023

LEGISLATION

Regulation 5(2)(a) Infrastructure Planning (Applications: Prescribed Forms and Procedure) Regulations 2009.

ISSUE PURPOSE

DCO Submission

FIGURE TITLE

Geophysical Survey and LiDAR Plan

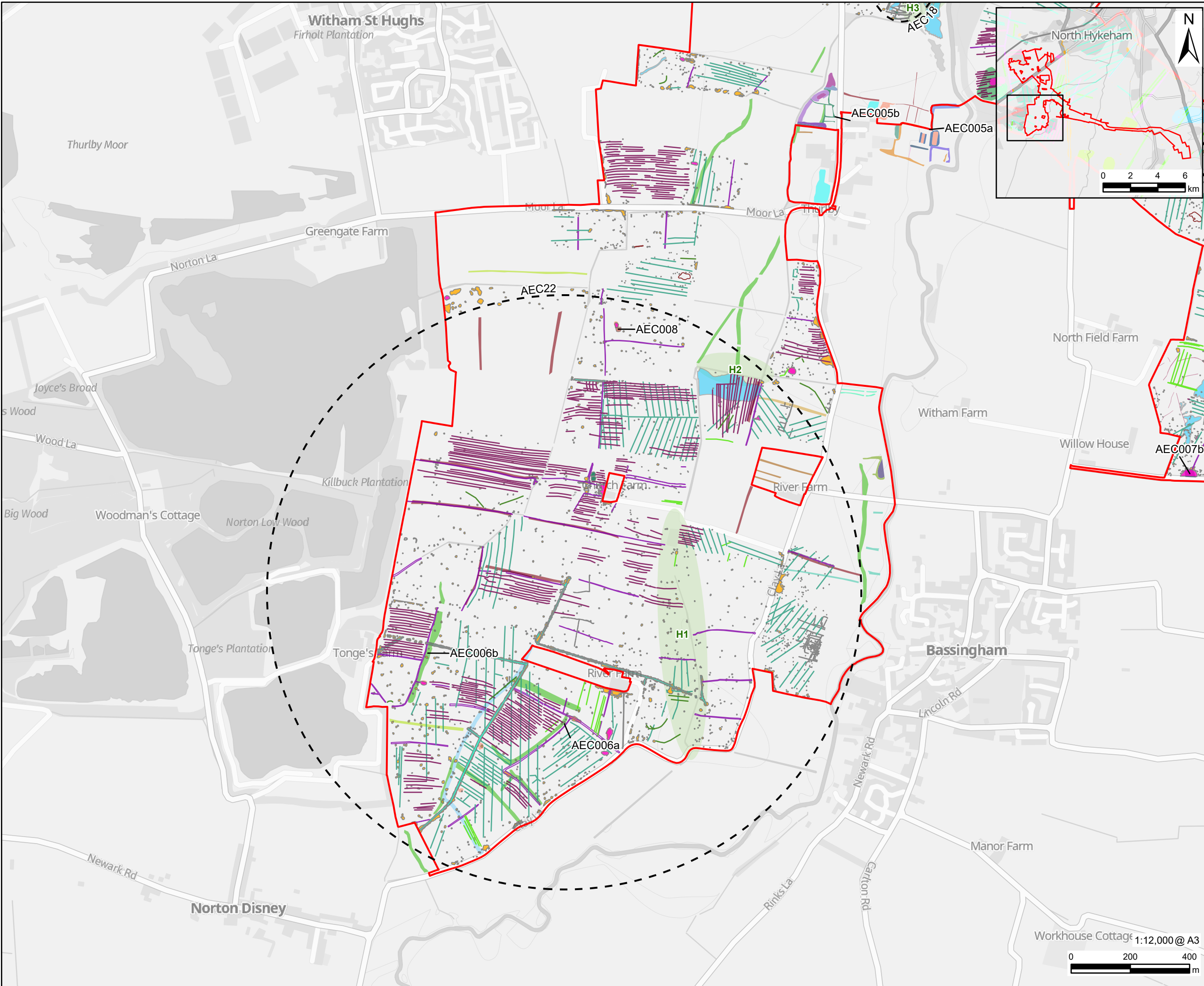
FIGURE NUMBER REV.

Figure 7-6 Sheet 2 of 6 01

DOCUMENT REFERENCE

EN010154/APP/6.2.

This drawing has been prepared for the use of AECOM's client. It may not be used, modified, reproduced or relied upon by third parties, except as agreed by AECOM or as required by law. AECOM accepts no responsibility and denies any liability whatsoever, to any party that uses or relies on this drawing without AECOM's express written consent. Do not scale this document. All measurements must be obtained from the stated dimensions.



PROJECT

Fosse Green Energy

CLIENT

Fosse Green Energy Ltd

CONSULTANT

AECOM Limited
Sunley House
4 Bedford Park
Surrey, CR0 2AP, UK
www.aecom.com

LEGEND

- | | | |
|---------------------------------|------------------------------|--|
| DCO Site Boundary | Settlement | |
| Geophysics Assets | Spoil Heap | |
| Historical Hedgerows | Strip Lynchet | |
| LiDAR - Regional Data | | |
| Recent Disturbance | Trackway | |
| Bank Earthwork | Trackway/Ridge | |
| Cottage | Baulk | |
| Ditch | Flood Defence | |
| Drainage Ditch | Mound - Dump | |
| Drove Road | ES Geophysical Survey | |
| Enclosure | Agricultural Trend | |
| Enclosure/ Draiaange | Trend | |
| Ditch | Drain | |
| Enclosure/Moat | Historic Cultivation | |
| Field Boundary | Archaeology | |
| Hollow | Ferrous | |
| Hollow/Quarry | Geology | |
| Lynchet | Historic Landscape Feature | |
| Mound | Modern Service | |
| Natural Feature | Possible Archaeology | |
| Natural Feature/Pit | Former Field Boundary | |
| Palaeochannel | Increased Response | |
| Pit/Dewpond | | |
| Plough Headland/ Flood Defences | | |
| Pond | | |
| Pond/DAM | | |

NOTES

GB Background: Contains OS data © Crown Copyright and database right 2025
Contains data from OS Zoomstack
Historic England 2025. Contains Ordnance Survey data © Crown copyright and database right 2025. Data obtained November 2023

LEGISLATION

Regulation 5(2)(a) Infrastructure Planning (Applications: Prescribed Forms and Procedure) Regulations 2009.

ISSUE PURPOSE

DCO Submission

FIGURE TITLE

Geophysical Survey and LiDAR Plan

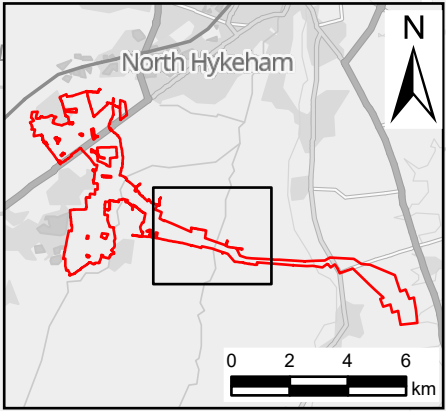
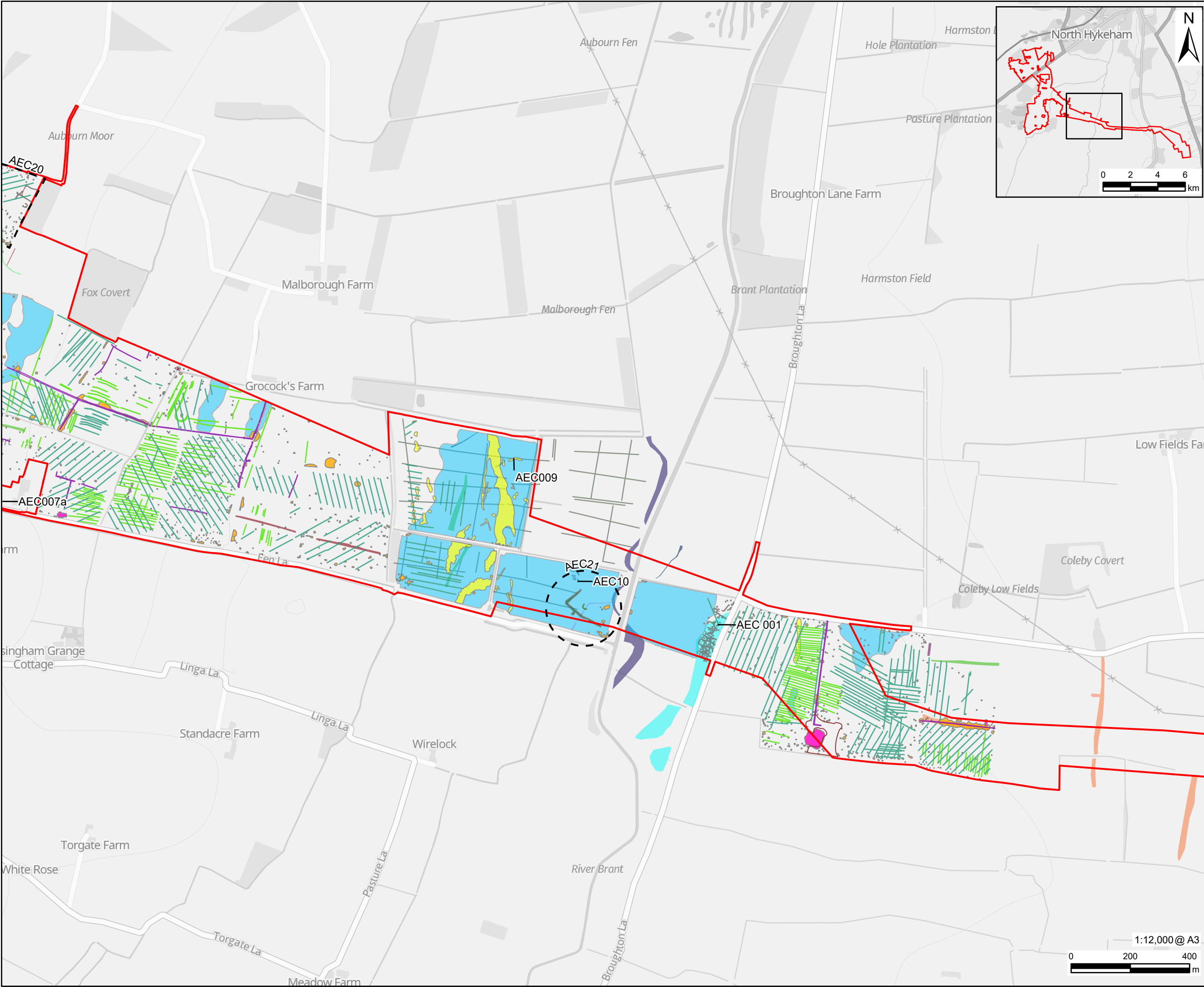
FIGURE NUMBER


Figure 7-6 Sheet 3 of 6

DOCUMENT REFERENCE

EN010154/APP/6.2.

This drawing has been prepared for the use of AECOM's client. It may not be used, modified, reproduced or relied upon by third parties, except as agreed by AECOM or as required by law. AECOM accepts no responsibility, and denies any ability whatsoever, to any party that uses or relies on this drawing without AECOM's express written consent. Do not scale this document. All measurements must be obtained from the stated dimensions.





PROJECT

Fosse Green Energy

CLIENT

Fosse Green Energy Ltd

CONSULTANT

AECOM Limited
Sunley House
4 Bedford Park
Surrey, CR0 2AP, UK
www.aecom.com

LEGEND

DCO Site Boundary

Geophysics Assets

LiDAR - Regional Data

- Anti Landing Trench
- Bomb Crater
- Bombing Range Target
- Ditch
- Ditch/Natural Feature
- Drainage Ditch
- Field Boundary
- Palaeochannel
- Pt/Dewpond
- Plough Headland/Field Boundary
- Pond
- Settlement
- Wall

LiDAR - Ellipse Data

- Bombing Range Target

ES Geophysical Survey

- Agricultural Trend
- Trend
- Drain
- Archaeology
- Ferrous
- Geology
- Geomorphology
- Historic Landscape Feature
- Modern Service
- Possible Archaeology
- Former Field Boundary
- Increased Response

NOTES

GB Background: Contains OS data © Crown Copyright and database right 2025
Contains data from OS Zoomstack Historic England 2025. Contains Ordnance Survey data © Crown copyright and database right 2025. Data obtained November 2023

LEGISLATION

Regulation 5(2)(a) Infrastructure Planning (Applications: Prescribed Forms and Procedure) Regulations 2009.

ISSUE PURPOSE

DCO Submission

FIGURE TITLE

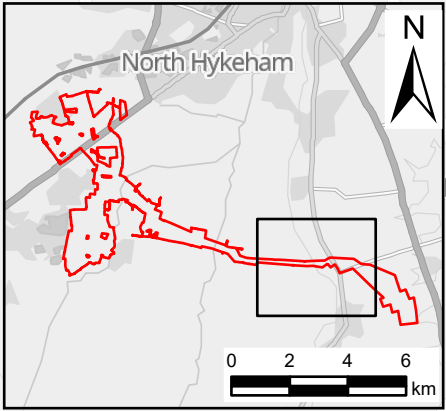
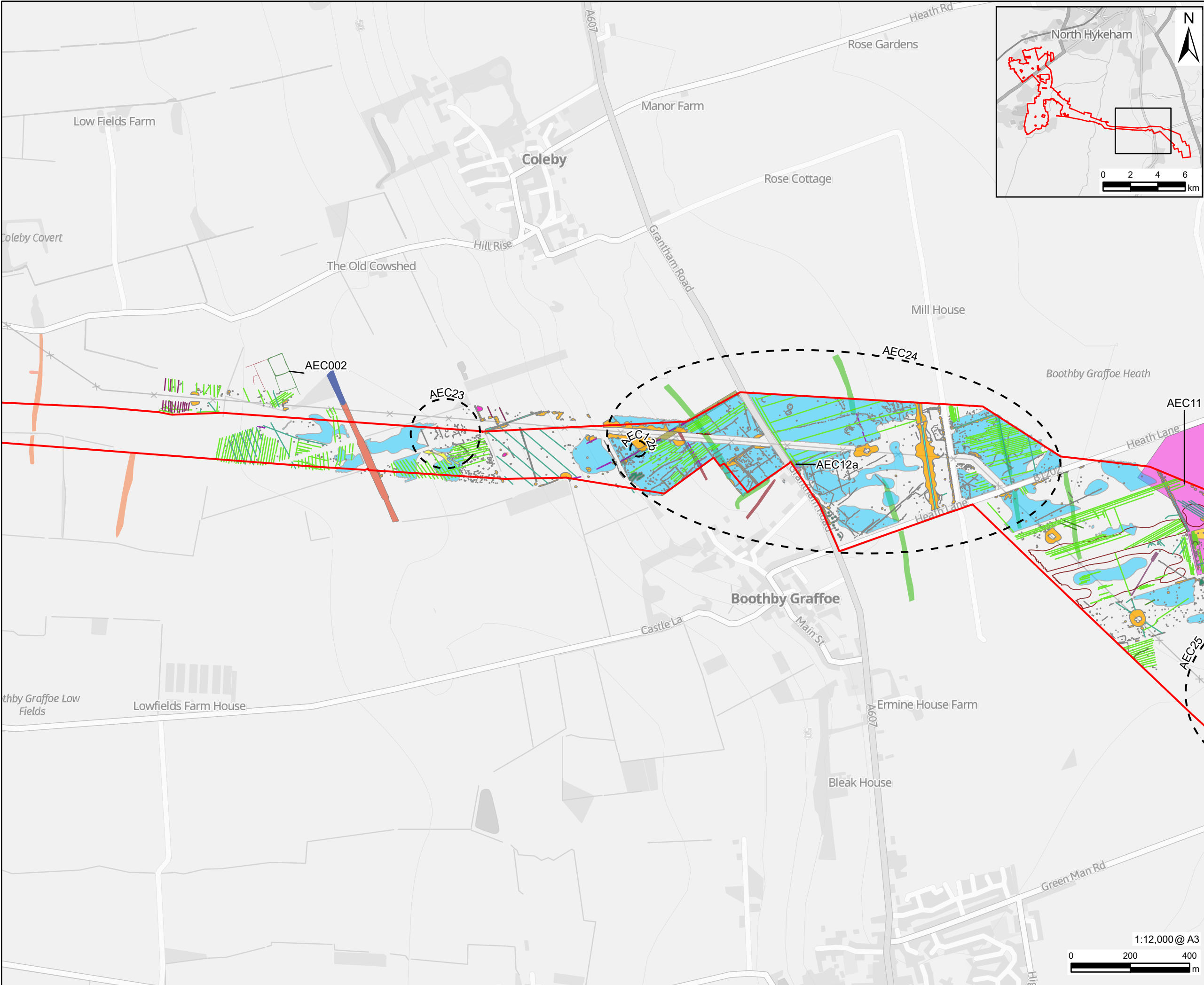
Geophysical Survey and LiDAR Plan

FIGURE NUMBER **REV.**

Figure 7-6 Sheet 4 of 6 01

DOCUMENT REFERENCE

EN010154/APP/6.2.



PROJECT

Fosse Green Energy

CLIENT

Fosse Green Energy Ltd

CONSULTANT

AECOM Limited
Sunley House
4 Bedford Park
Surrey, CR0 2AP, UK
www.aecom.com

LEGEND

DCO Site Boundary	Wind Pump
Geophysics Assets	ES Geophysical Survey
LiDAR - Regional Data	Agricultural Trend
Antenna	Trend
Barbed Wire	Drain
Obstruction/Building	Historic Cultivation
Building	Archaeology
Beam Approach	Ferrous
Beacon	Geology
Ditch	Geomorphology
Field Boundary	Historic Landscape Feature
Field Boundary/Parish Boundary	Modern Service
Hut	Possible Archaeology
Military Airfield	Former Field Boundary
Mound	Increased Response
Pt/Dewpond	
Plough Headland/Field Boundary	
Pond	
Railway Cutting	
Railway Embankment	
Rectilinear Enclosure	

NOTES

GB Background: Contains OS data © Crown Copyright and database right 2025
Contains data from OS Zoomstack
Historic England 2025. Contains Ordnance Survey data © Crown copyright and database right 2025. Data obtained November 2023

LEGISLATION

Regulation 5(2)(a) Infrastructure Planning (Applications: Prescribed Forms and Procedure) Regulations 2009.

ISSUE PURPOSE

DCO Submission

FIGURE TITLE

Geophysical Survey and LiDAR Plan

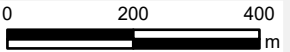
FIGURE NUMBER

Figure 7-6 Sheet 5 of 6

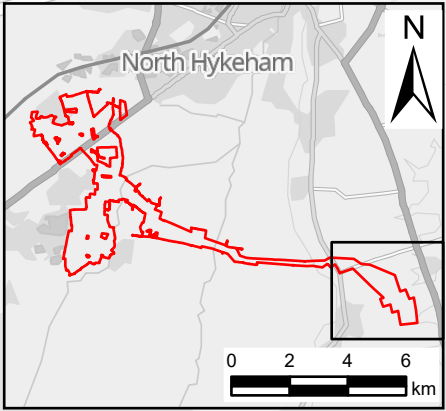
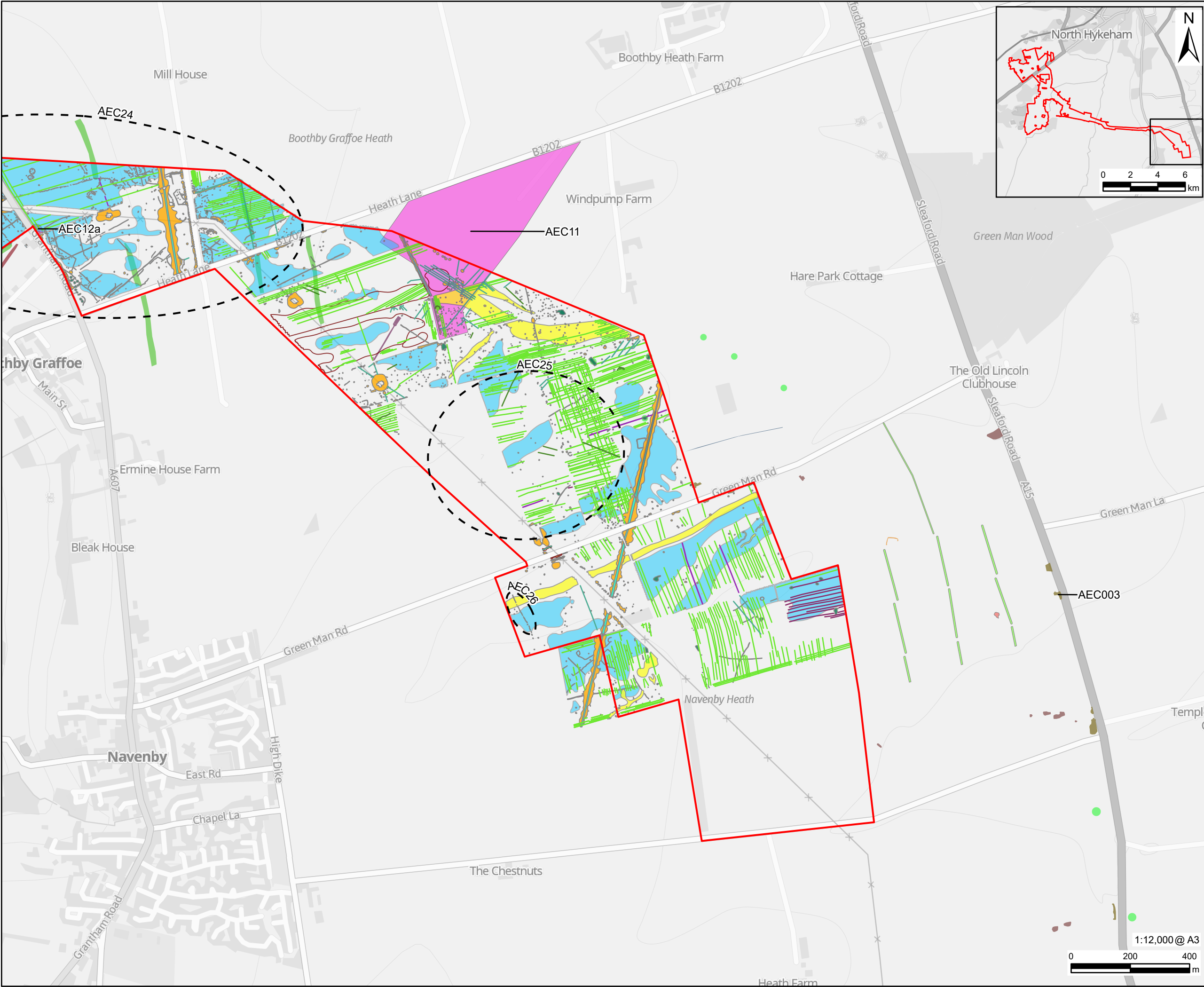
DOCUMENT REFERENCE

EN010154/APP/6.2.

1:12,000 @ A3



This drawing has been prepared for the use of AECOM's client. It may not be used, modified, reproduced or relied upon by third parties, except as agreed by AECOM or as required by law. AECOM accepts no responsibility and denies any liability whatsoever, to any party that uses or relies on this drawing without AECOM's express written consent. Do not scale this document. All measurements must be obtained from the stated dimensions.



PROJECT

Fosse Green Energy

CLIENT

Fosse Green Energy Ltd

CONSULTANT

AECOM Limited
Sunley House
4 Bedford Park
Surrey, CR0 2AP, UK
www.aecom.com

LEGEND

DCO Site Boundary	LiDAR - Ellipse Data
Geophysics Assets	Dewpond
LiDAR - Regional Data	ES Geophysical Survey
Antenna	Agricultural Trend
Anti Landing Trench	Trend
Barbed Wire	Drain
Obstruction/Building	Historic Cultivation
Building	Archaeology
Beam Approach	Ferrous
Beacon	Geology
Dewpond	Geomorphology
Ditch	Historic Landscape Feature
Enclosure	Modern Service
Field Boundary	Possible Archaeology
Hut	Former Field Boundary
Military Airfield	Increased Response
Mound	
Pit	
Pit/Dewpond	
Pt/Dewpond	
Quarry	
Road/Unknown	

NOTES

GB Background: Contains OS data © Crown Copyright and database right 2025
Contains data from OS Zoomstack
Historic England 2025. Contains Ordnance Survey data © Crown copyright and database right 2025. Data obtained November 2023

LEGISLATION

Regulation 5(2)(a) Infrastructure Planning (Applications: Prescribed Forms and Procedure) Regulations 2009.

ISSUE PURPOSE

DCO Submission

FIGURE TITLE

Geophysical Survey and LiDAR Plan

FIGURE NUMBER REV.

Figure 7-6 Sheet 6 of 6 01

DOCUMENT REFERENCE

EN010154/APP/6.2.